

# IMAGEPRINT

## Quick Start Guide *Windows 2000/XP Edition*

This Quick Start Guide is designed to assist in the basic installation and setup of **IMAGEPRINT**. The complete **IMAGEPRINT** manual is provided in PDF format on the enclosed CD-ROM. Please read the manual for a comprehensive explanation of **IMAGEPRINT** and its powerful toolset. You are also encouraged to run the Interactive Tutorial which is included on the CD.

### **IMAGEPRINT** includes:

- IMAGEPRINT** Server Windows 2000/XP Edition
- IMAGEPRINT** Client Macintosh OSX Edition
- Interactive Tutorial
- User's Manual
- One USB security dongle

### System Requirements:

- Windows 2000 or XP
- Pentium III or higher - 400 MHz
- 128 MB RAM
- 1 GB Free Hard Drive Space

These are the minimum hardware requirements for acceptable operation. RIP software by its very nature is processor and bandwidth intensive. Slower, less powerful computers can contribute to the inability of a printer to operate at its intended speed. This is independent of the interface used to communicate with the printer, and is often related to disk drive speed, data bus speeds, and other factors associated with slower computer systems.

# INSTALLING IMAGEPRINT

**IMPORTANT: DO NOT INSERT THE USB DONGLE UNTIL INSTRUCTED TO DO SO. THE SOFTWARE WILL NOT INSTALL PROPERLY IF THE STEPS ARE NOT FOLLOWED IN THE ORDER PRESENTED .**

Before installing **IMAGEPRINT**, verify that the printer is operating properly and that there is proper communication with the computer.

## LOCATE THE PROPER PORT NAME

**Skip this step if installing a Fuji Pictography or a printer connected via ethernet.**

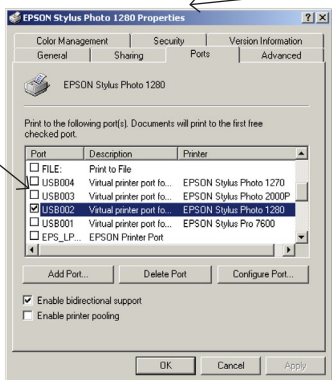
Go to the Windows Start Menu and locate the Printers folder in the control panel.

**Right Click** on the printer that you are going to use with **IMAGEPRINT**.

Choose **Properties** and Click on the **Port** tab. The Window should look similar to the one shown below.

Locate the box with a check mark in it. In this example, the Windows operating system has assigned the port "USB002" to our Epson 1280. Your printer port may be different. Be sure to write down the port name for your printer in the space below then Click Cancel.

In this example the printer is an Epson 1280. Confirm that your printer name appears here.



Record your Port Name for later use.

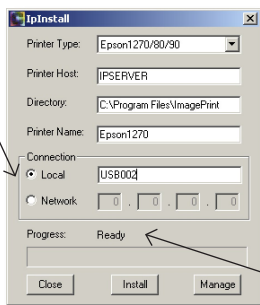
Insert the **IMAGEPRINT** CD into your CD-ROM drive. The autoplay disc will launch the Installer program. Follow the on-screen instructions until the IPInstall window appears.

If you're using one computer and one printer, do not change the **Printer Host**. If you have multiple printers and computers you should refer to the complete User's manual for detailed instructions.

1. For parallel, USB or Firewire port connections Click **Local**. In this example we're using USB002. You should enter the Port Name you wrote down earlier. For ethernet connections only, Click Network and enter your printer's IP address.

2. Choose your **Printer Type** from the drop-down menu.

3. In the **Directory** box you may enter the name of the folder where you'd like to install **IMAGEPRINT**, or use the default location shown



4. Click **Install**. Please be patient. This process may take up to 5 minutes to complete.

5. When the Progress line has changed from "Installation Started" to "Installation Complete" Click Close.

Continue following the on-screen instructions. Be sure to reboot your computer before proceeding to the next step.

## INSTALLING DONGLE DRIVERS

After reboot, insert the enclosed dongle to any free USB port. Windows should automatically detect and install the proper drivers. The dongle must be attached to your computer whenever you use **IMAGEPRINT** or a DEMO watermark will appear across the printed area.

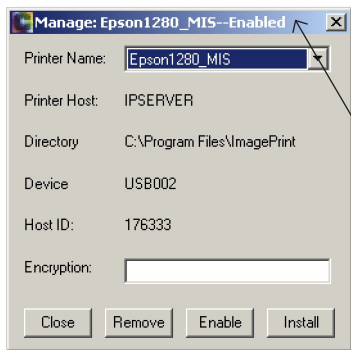
# THE IPMANAGE WINDOW

You will now use the IPManage utility to enter the encryption code that will enable you to print using **IMAGEPRINT**. Before launching IPManage, you will need to get your encryption. The fastest way is via the internet and your email address. Enter the complete address **www.colorbytesoftware.com/getcode.php** into your browser. You will be asked to enter the Login ID and dongle number printed on the back of your **IMAGEPRINT** package.

After you receive your encryption, go to your desktop and double-click on the IPInstall icon. When the IPInstall window opens, Click the **Manage** button. The IPManage window will appear.

The **Host ID** field is filled automatically by **IMAGEPRINT**. Your number will match the number printed on your dongle. If no number appears, the dongle has not been properly installed. Make sure the dongle is plugged in to an active USB port.

1. In the **Printer Name** box, make sure that the printer choice is correct. In this example we've chosen Epson 1280. You should choose your printer type from the drop-down list.



2. Type your encryption number in the field provided. Click the Enable button.

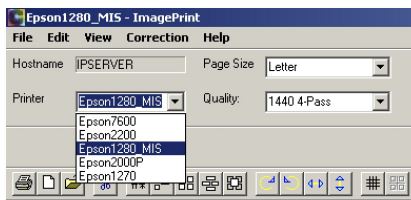
3. The encryption has been successfully installed when the word "Disabled" changes to "Enabled" in the window title bar. If it does not you may have mistyped the code and should re-enter it and Click Enable again.

4. Click Close.

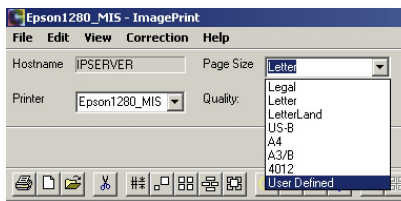
**IMAGEPRINT** is now installed. You may now double-click on the **IMAGEPRINT** icon to launch the application.

## MAKING YOUR FIRST PRINT

There are just a few key settings that need to be adjusted before a print is made. It helps to have a reference image open for both viewing on screen, and to make a test print. We recommend using one of the sample images that are automatically installed with ImagePrint. To locate a sample image open the ImagePrint folder, then open the **Test Images** folder. Select “Sample Landscape” as the test image.

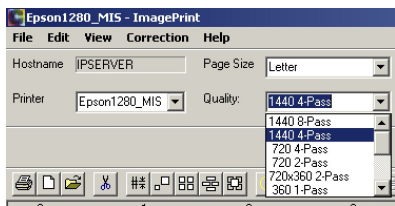


Verify that the correct printer is selected.



For this example, a letter size page is selected. This setting is used to define the size of the physical paper loaded in the printer. ImagePrint works with the defined area of the paper.

The quality setting adjusts the printer resolution. For this example, choose one of the 1440 qualities.



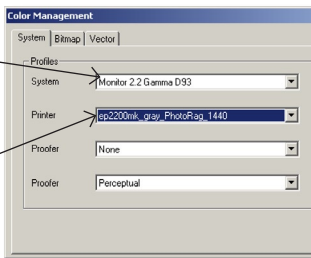
# COLOR MANAGEMENT SETTINGS

To access the Color Management settings Choose Edit from the menu at the top of the toolbar. Scroll down to Color Management and the dialog box will open.

## The System Tab

Set the **monitor profile**. Monitor 2.2 D93 should be used if there is no custom display profile available.

Choose an appropriate **ICC output profile** for the model of printer that is installed. See below for assistance with selecting the proper profile.



## About Profiles

Each profile is created for a specific printer, paper, inkset, and resolution. Always choose an appropriate color profile for the printer, paper, resolution, and viewing environment. Profiles that are included with ImagePrint are named in a specific manner. For example, the profile **ep1280\_luster\_1440\_eday** is a profile for the Epson 1280 printer (**ep1280**), on Premium Luster paper (**luster**), printed at **1440** dpi resolution, and color balanced for daylight viewing conditions (**eday**).

**IMAGEPRINT** provides 5 types of color balanced profiles. Each profile is balanced for specific lighting conditions. See chart below for details.

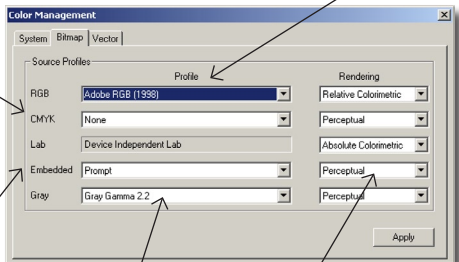
EDAY	Balanced for daylight
ECWF	Balanced for cool-white fluorescent lighting
ECWF2	Balanced for skin tones in portrait work
ETUNG	Balanced for tungsten light
GREY	Exclusively for the grey scale workflow available only with 7-color Ultrachrome inks.

*Epson 2200, 7600, 9600 Ultrachrome printer owners should refer to the end of this guide for additional information on printing greyscale images.*

## The Bitmap Tab

Moving to the Bitmap tab of color management reveals more settings. In this example “Adobe RGB 1998” is chosen as the RGB source space in the “RGB” box. This setting should generally coincide with the settings used in programs such as Photoshop so that all applications are synchronized.

Because the test image in use is RGB, the **CMYK** settings will have no effect on this image. Typically it will be set to whatever is best suited to the user’s specific workflow.



Set the **Embedded** box to “Apply”, this will use the embedded profile (if one is present) in an image file and override the RGB source space setting.

The settings for the **Gray** profile should be set to whatever is currently used in Photoshop, typically Gray Gamma 2.2.

In the rendering **Intent** box to the right of **Embedded**, choose Relative Colorimetric or Perceptual. Either one will work for the purpose of this setup.

The **Vector** tab is where color management settings are specified for vector elements of a file. For the purpose of printing the sample image, there are no vector settings that need to be made, therefore the settings can remain at “NONE”.

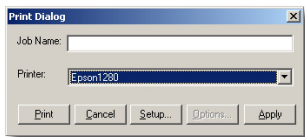
Close the Color Management window.

## PRINTER SETTINGS

Along the top of the screen, choose File. Scroll down to Print. The Print Dialog Window will appear.



Click the **Setup** Button.



The Printer Setup window is where Ink set, number of Copies, and paper cutting options are set. **NOTE: The ink, quality, and resolution are set automatically when using IMAGEPRINT profiles for all Epson Ultrachrome printers. If you're using your own ICC profiles, refer to "Choosing Your Ink Set Manually".** For all other printers please consult the **IMAGE-PRINT** manual for details selecting the proper inkset. Click OK to close the Print Setup window.

Click Apply in the Print Dialog window to start the print.

## CHECK THE STATUS OF YOUR PRINT JOBS

Now let's check the status of your test print.

Open the **IMAGEPRINT** Folder.

Open the Spool Folder.

Double-click the Spool Face icon.

The Spool Face window will appear. Check the printer status in the lower portion of the window. Verify that it reads Enabled.

### *About Spool Face*

*From the Spool Face window you can view the status of all your print jobs. It will warn you if there is a problem connecting to the printer that requires your attention.*

*You may want to drag the icon to your Macintosh dock for future reference. You should review the Spool Face section*

of the **IMAGEPRINT** manual to learn more about this powerful tool.

## CHOOSING YOUR INK SET MANUALLY

If you're using your own ICC profiles you will need to select the proper ink set from the Printer Settings window. Select your proper ink set according to the chart below.

KCMYcm Pigment (color printing)	Epson printers with pigment/CF/archival inks and Ultrachrome printers using Photo Black .
KMCMYcm Pigment (color printing)	Ultrachrome printers using Matte Black.
K Pigment	Not currently supported.
K Matte Pigment	Not currently supported.
Gray Pigment (B & W printing)	Ultrachrome printers using Photo Black.
Gray Matte Pigment (B & W printing)	Ultrachrome printers using Matte Black.
KCMYcm Dye	Epson printers using Dye ink.

## EPSON ULTRACHROME PRINTERS AND THE TINT PICKER

**IMAGEPRINT** allows you to produce both high-quality color and grayscale images using the 7-color Ultrachrome inks found standard on the 2200, 7600 and 9600 Epson printers. To make best use of this capability the proper profile is essential. Most important the profile must match the type of black ink - Photo Black or Matte Black that is loaded in your printer. This mismatch is the typical culprit in unsatisfactory results. Additional sample profiles are provided below to better acquaint

you with our naming convention.

**Example 1: ep2200 luster\_1440\_eday**

This profile is for the Epson 2200 (**ep2200**), using standard Photo Black ink, Luster paper (**luster**), 1440 dpi (**1440**), and daylight balanced viewing environment (**eday**).

**Example 2: ep2200MK Velvet\_1440\_ECWF**

This profile is for the Epson 2200, using Matte Black ink (**MK**), Epson Velvet paper (**Velvet**), 1440 dpi, and color balanced for cool white fluorescent lighting conditions.

**Example 3: ep2200\_grey\_luster\_1440**

This profile is made for *greyscale printing* (grey) on the Epson 2200, using the Photo Black ink, on Luster paper, at 1440 dpi. *To enable the TINT PICKER, you must select a profile with “grey” in the name.*

**Example 4: ep2200MK\_grey\_EnhMatte\_1440**

This profile is made for greyscale printing on the Epson 2200, using Matte Black ink, on Enhanced Matte paper, at 1440 dpi.